



General Overview Datasheet

- Automated monitoring
- Alerts
- Security and failsafe
- Cost savings
- Summary of key features
- Key benefits



DATASTREAM

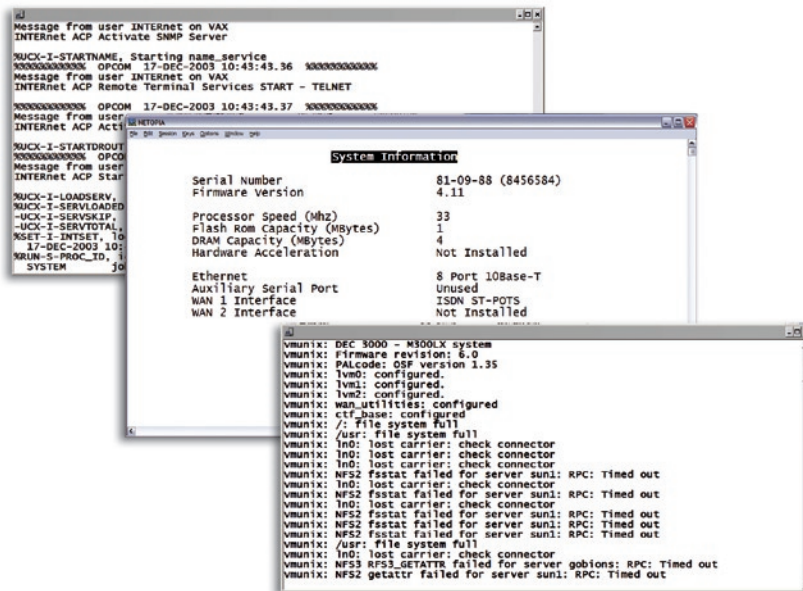
In Touch, In Command, In Business

General Overview Datasheet

DataStream is a product that can increase the reliability of your IT infrastructure, whilst reducing operational costs. With its capability to constantly monitor and manage devices and applications across your network, DataStream is a valuable addition to your IT team.

Automated Monitoring

From a single location, **DataStream** is able to monitor a variety of servers and other key devices such as network bridges, routers, uninterruptible power supplies (UPS) and applications for important messages and status changes.



Alerts

DataStream cleverly filters out the routine data, only allowing important messages to be sent to alert key personnel as to vital status changes. This ensures that only key messages get through and more mundane messages are merely logged, time stamped and archived.



Severity	System	Time	Event	Class	Text
CRITICAL	Unix	16/11/2003 18:29:41	PANIC	SYSTEM	vmunix: panic (cpu 0): Machine check
CRITICAL	Alpha-VMS	16/11/2003 18:37:46	SCHEDULER_JOBS	SCHEDULER	Job number 56 has failed (BANK1_1)
CRITICAL	VAX-VMS	16/11/2003 18:37:45	SCHEDULER_JOBS	SCHEDULER	Job number 56 has failed (BANK1_1)
MAJOR	Windows_NT	16/11/2003 18:29:46	NETLOGON	system	This Windows NT computer is configura
MAJOR	Unix	16/11/2003 18:31:46	FS_FULL	DISK	file system full
MAJOR	Windows_NT	16/11/2003 18:36:46	Service Control Manager	system	Login attempt with current password
MAJOR	Windows_NT	16/11/2003 18:32:46	Service Control Manager	system	The SWEEP for Windows NT Network
MAJOR	Unix	16/11/2003 18:38:46	LOST_CARRIER	NETWORK	vmunix: in0: lost carrier: check conne
MAJOR	Windows_NT	16/11/2003 18:38:46	Service Control Manager	system	The SWEEP for Windows NT Update s
MAJOR	Windows_NT	16/11/2003 18:37:46	Service Control Manager	system	The SWEEP for Windows NT Network
MAJOR	Windows_NT	16/11/2003 18:31:46	Service Control Manager	system	The Net Logon service terminated wit
MAJOR	Windows_NT	16/11/2003 18:35:46	NETLOGON	system	No Windows NT Domain Controller is
MAJOR	Windows_NT	16/11/2003 18:33:46	Service Control Manager	system	The SWEEP for Windows NT Update s
MINOR	Unix	16/11/2003 18:37:46	NFS2_FSSTAT_FAILED	NFS	vmunix: NFS2 fsstat failed for server
WARNING	Alpha-VMS	16/11/2003 18:32:46	SCHEDULER_JOBS	SCHEDULER	Job number 56 has started (BANK1_1)
WARNING	VAX-VMS	16/11/2003 18:34:45	SCHEDULER_JOBS	SCHEDULER	Job number 55 has started (BANK1_1)
WARNING	Alpha-VMS	16/11/2003 18:34:46	SCHEDULER_JOBS	SCHEDULER	Job number 55 has started (BANK1_1)
WARNING	VAX-VMS	16/11/2003 18:32:45	SCHEDULER_JOBS	SCHEDULER	Job number 56 has started (BANK1_1)
INDETERMINATE	Alpha-VMS	16/11/2003 18:31:46	SECURITY_SERVER_START	SECURITY	The security server is starting up
INDETERMINATE	VAX-VMS	16/11/2003 18:29:43	NEW_OPER_LOG	OPERATOR	A new OPERATOR.LOG file has been
INDETERMINATE	Alpha-VMS	16/11/2003 18:29:44	NEW_OPER_LOG	OPERATOR	A new OPERATOR.LOG file has been
INDETERMINATE	VAX-VMS	16/11/2003 18:30:45	PROXY_SERVER_START	SECURITY	The proxy server is starting up
INDETERMINATE	Alpha-VMS	16/11/2003 18:30:46	PROXY_SERVER_START	SECURITY	The proxy server is starting up
INDETERMINATE	VAX-VMS	16/11/2003 18:31:45	SECURITY_SERVER_START	SECURITY	The security server is starting up

On-screen Events

These messages can be sent in a variety of ways, to suit the needs of the recipient, normally taking the form of e-mail, on-screen message, SMS/Pager or even by spoken message.

DataStream logs all messages and status reports so that the events leading up to a situation arising on the system can be analysed and used to ensure that it can be prevented from happening again.

Throughout its operation, DataStream builds a profile of day to day messages, and will also send out an alert when an expected message is not received – potentially predicting problems before they can affect the monitored object's integrity.

```

18:49:46 vmunix:
18:49:46 vmunix: Alpha boot: available memory from 0xc08000 to 0x4000000
18:49:46 vmunix: DEC OSF/1 V3.0B (Rev. 358.78); Wed Nov 16 02:23:47 EST 1994
18:49:46 vmunix: physical memory = 64.00 megabytes.
18:49:46 vmunix: available memory = 49.51 megabytes.
18:49:46 vmunix: using 238 buffers containing 1.85 megabytes of memory
18:49:46 vmunix: tc0 at nexus
18:49:46 vmunix: tcds0 at tc0 slot 4
18:49:46 vmunix: scsi0 at tcds0 slot 0
18:49:46 vmunix: rz3 at scsi0 bus 0 target 3 lun 0 (DEC RZ25L (C) DEC 0008)
18:49:46 vmunix: rz5 at scsi0 bus 0 target 5 lun 0 (DEC RZ25L (C) DEC 0006)
18:49:46 vmunix: in0: DEC LANCE Module Name: PHAD-BA
18:49:46 vmunix: in0 at tc0 slot 5
18:49:46 vmunix: in0: DEC LANCE Ethernet Interface, hardware address: 08-00-2B-94-49
18:49:46 vmunix: scc0 at tc0 slot 5
18:49:46 vmunix: bba0 at tc0 slot 5
18:49:46 vmunix: fb0 at tc0 slot 6
18:49:46 vmunix: 1280X1024
18:49:46 vmunix: DEC 3000 - M300LX system
18:49:46 vmunix: Firmware revision: 6.0
18:49:46 vmunix: PALcode: OSF version 1.35
18:49:46 vmunix: lvm0: configured.
18:49:46 vmunix: lvm1: configured.
18:49:46 vmunix: lvm2: configured.

```

Logged Console Data

DataStream can be configured to automatically respond to certain alerts, by instigating corrective actions that maintain the smooth running of the enterprise.



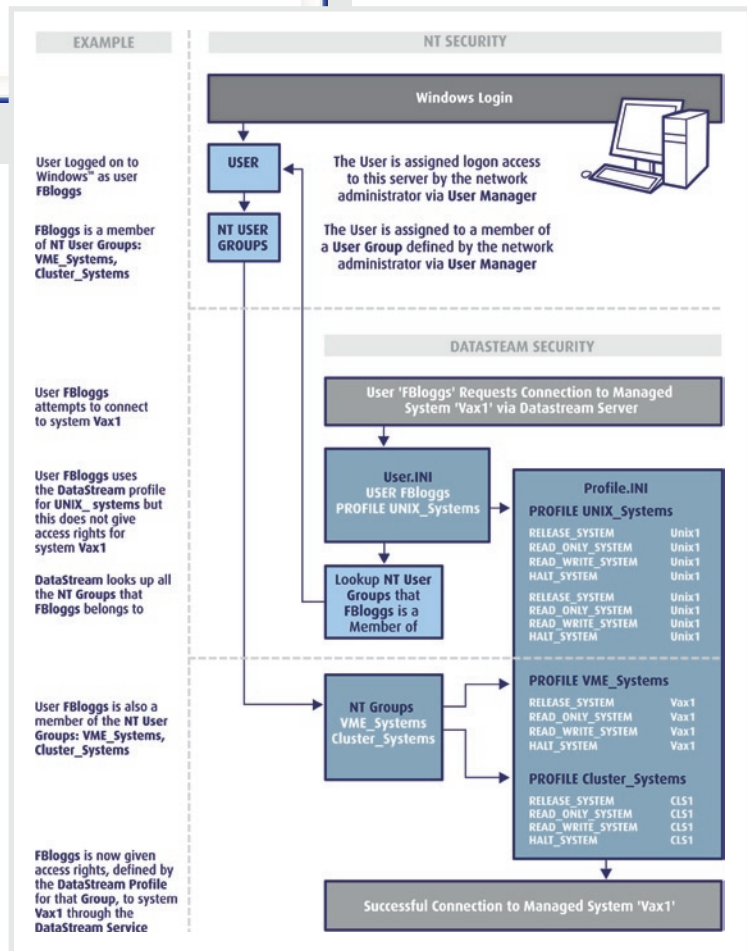
Security and Failsafe

DataStream provides secure access, by adopting Windows standard username and password authorisation. Users can be granted access to some or all of the managed objects – controlled by an administrator.

```

OpenVMS_Boot.scp - Notepad
File Edit Format View Help
#
# BOOT VMS SCRIPT, this script should only execute on OpenVMS systems
# it ultimately executes the "BOOT" Console command, you may
# want to create some rules which process the output produced by this
# script on the managed OpenVMS system
#
# This script should be set up to execute when an event is generated
# as a result of >>> appearing on the console device of the attached
# OpenVMS system.
#
:START
#
# Simply send the boot command...
#
SEND "BOOT{CR}{LF}"
#
# Now exit the script with a completion message
#
:END_SCRIPT
EXIT "OpenVMS Boot completed Successfully" "(CLEAR)"
  
```

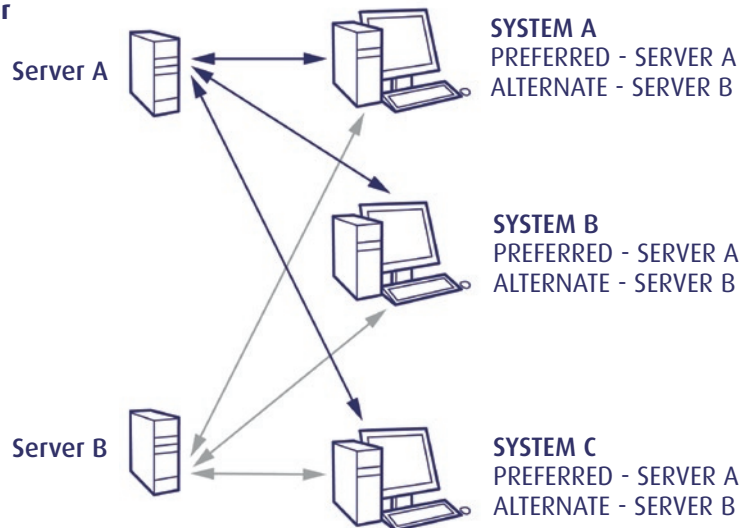
Scripting



Security Model

Should there be a problem with the server running **DataStream**, it can be configured to automatically switch to a backup server to guarantee continuity.

Failover



Cost Savings

By investing in **DataStream**, you can quickly recover your investment, as it will provide your organisation with cost reductions gained from having less expenditure on IT, a reduced headcount, less travelling costs, free up valuable data centre space and power consumption. Less managed object downtime will also result in higher productivity and greater levels of customer satisfaction – ultimately making your business more competitive.

Summary of Key Features

- Collects and logs all system messages sent to each managed device.
- Can scan and filter all system messages to determine the system/application status.
- Notify key personnel of important status changes – by a variety of methods that include e-mail, on screen message and speech.
- Fully control all elements of the managed system from anywhere on the network.
- Provides user access security.
- Failsafe facility to guard against hardware failure.

Key Benefits

- Higher levels of IT system reliability.
- Reduced IT expenditure – lower headcount.
- Improved productivity due to increased system availability.
- Peace of mind from knowing your IT system is in safe hands.